

1.

# Office

UPHOLSTERY COLLECTION

[www.moschellasedute.it](http://www.moschellasedute.it)

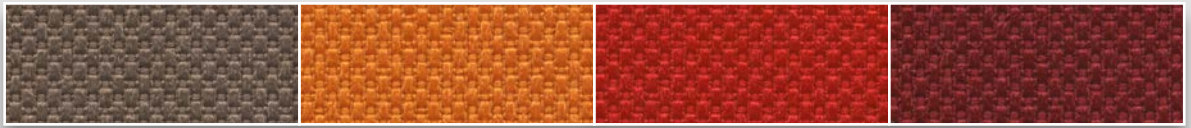
# 1A

## CATEGORY

Composition: 100% Polyester FR  
Abrasion Resistance: 80'000 Martindale cycles  
Flammability: C1 - B1 - M1 - CRIB 5 - EN 1021/1-2



1010

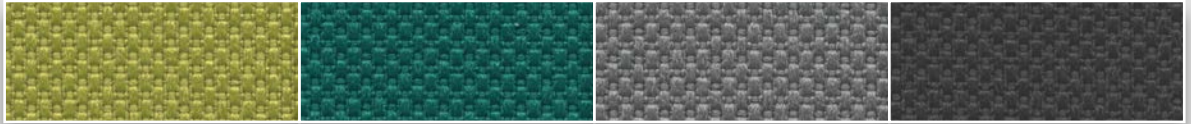


2024

3082

4028

4017

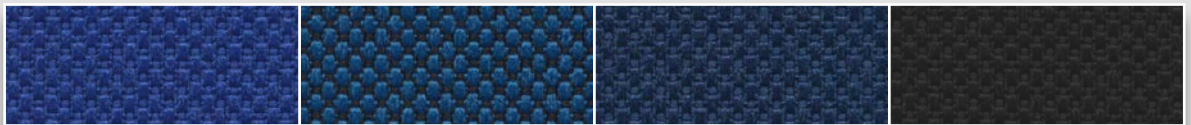


7025

7008

8032

8017



6071

6512

6098

8033

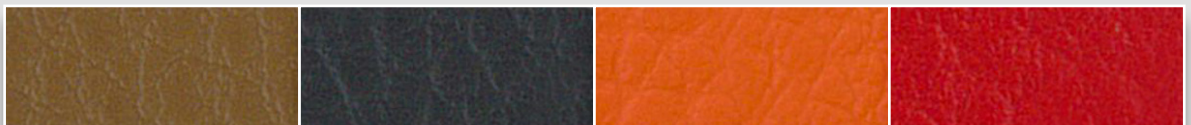
# 1B

## CATEGORY

Composition: 88% PVC, 8% PES, 4% COT  
Abrasion Resistance: 50'000 Martindale cycles  
Flammability: FMVSS 302



10000

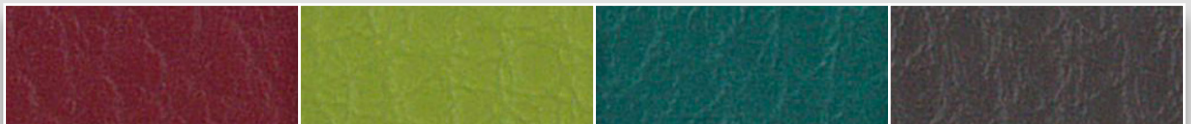


9312

9269

9715

9290

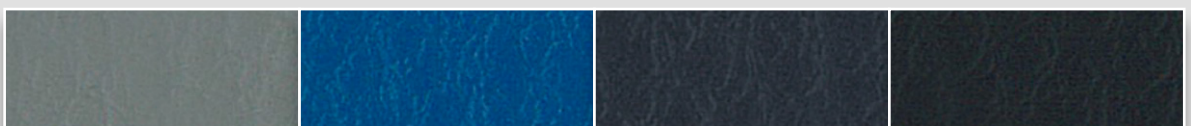


9272

9714

9277

9329



9327

9806

9331

10001

# 2A

## CATEGORY

Composition: surface 70% Vinyl - 30% Pu;  
backing 100 % Microfibre Polyester  
Abrasion Resistance: 100'000 Martindale cycles  
Flammability: EN 1021 parts 1-2



400



400

402

415

420

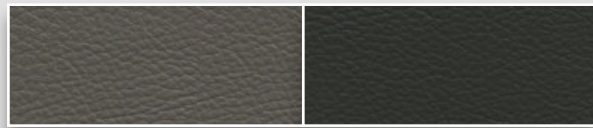


429

425

469

471



475

490

# 2B

## CATEGORY

Composition: 100% Polyester  
Abrasion Resistance: 100'000 Martindale cycles  
Flammability: C1 - B1 - M1 - CRIB 5 - EN 1021/1-2



1006

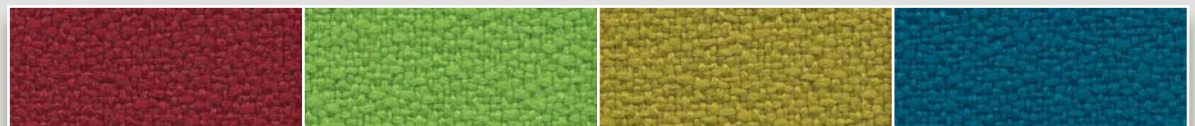


3083

4030

4066

4008

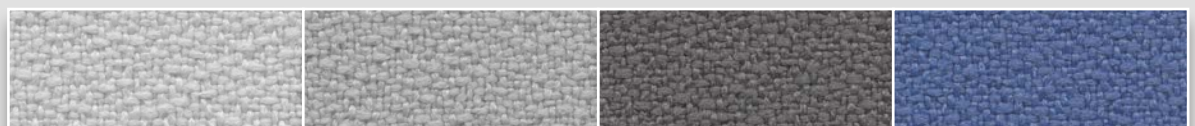


4009

7013

3030

6031

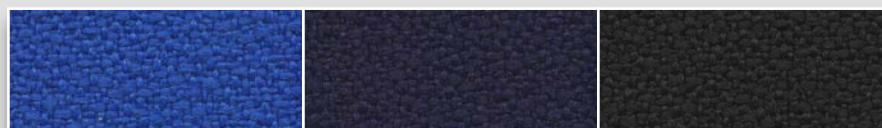


8002

8027

8009

6026



6071

6098

8033

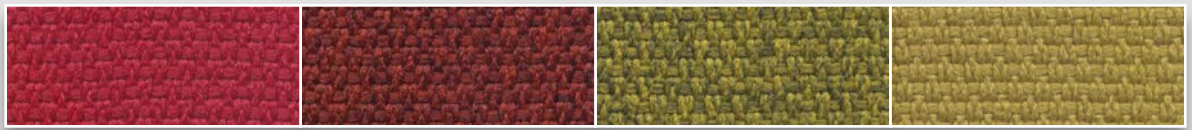
# 3A

## CATEGORY

Composition: 100% Polyester  
Abrasion Resistance: 100'000 Martindale cycles  
Flammability: C1 - B1 - M1 - CRIB 5 - EN 1021/1-2



4028

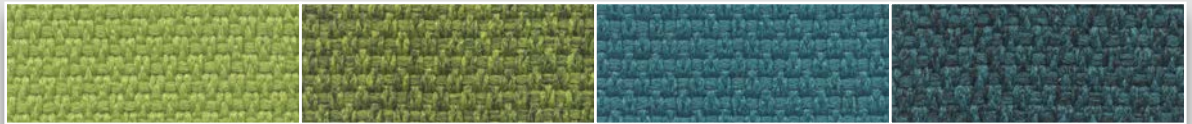


4028

4528

3581

3081

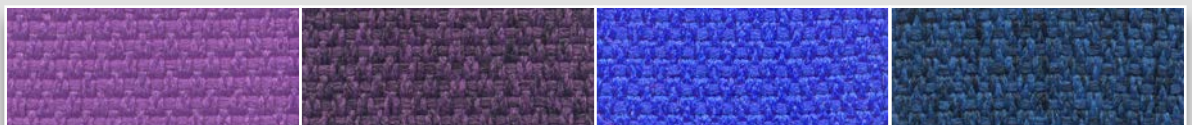


7022

7522

7003

7503



5096

5596

6004

6504



6024

6524

1014

1514



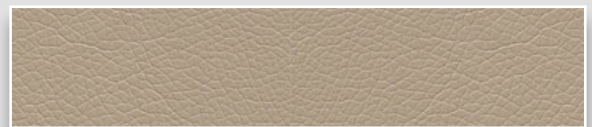
8011

8511

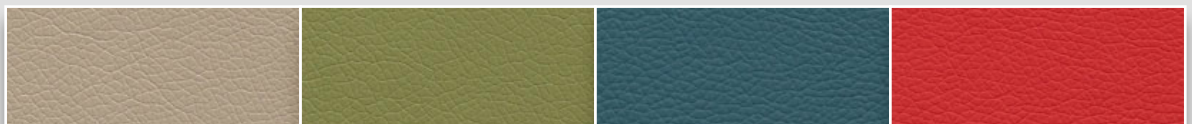
# 3B

## CATEGORY

Composition: surface 100% PU;  
backing 33% Cotton; 67% Polyester  
Abrasion Resistance: 200'000 Martindale cycles  
Flammability: BS 5852; EN 1021/1-2



07

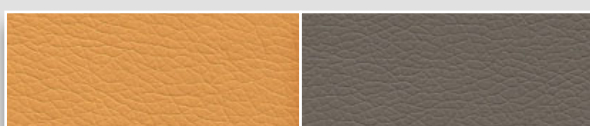


07

43

68

29



09

19

# 4A

## CATEGORY

Type: real leather, corrected grain  
Thickness: 0,9 - 1,1 mm  
Colour fastness to rubbing dry / wet: 500 / 200 cycles  
Flexing endurance: 20'000 cycles



1

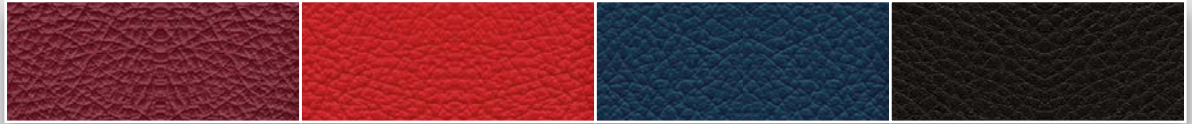


84

21

238

336



413

441

539

560

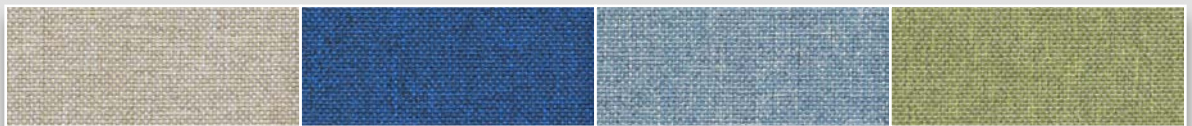
# 4B

## CATEGORY

Composition: 100% Polyester  
Abrasion Resistance: 70'000 Martindale cycles  
Flammability: C1 - B1 - M1 - CRIB 5 - EN 1021/1-2



4504

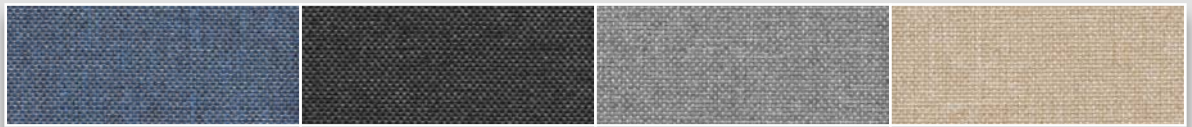


1502

6505

6501

7503



6503

8504

8501

1501



4505

2503

7502

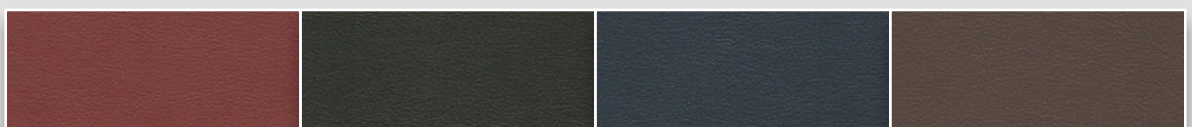
# 4C

## CATEGORY

Composition: surface 100% PU;  
backing 33% Cotton; 67% Polyester  
Abrasion Resistance: 200'000 Martindale cycles  
Flammability: BS 5852; EN 1021/1-2



629

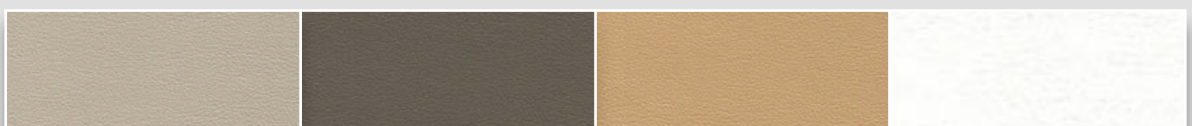


625

690

669

620



607

619

611

600

# 5

## CATEGORY

Type: real leather, lightly buffed natural grain  
 Thickness: 1,2 - 1,4 mm  
 Colour fastness to rubbing dry / wet: 500 / 250 cycles  
 Flexing endurance: 50'000 cycles



253

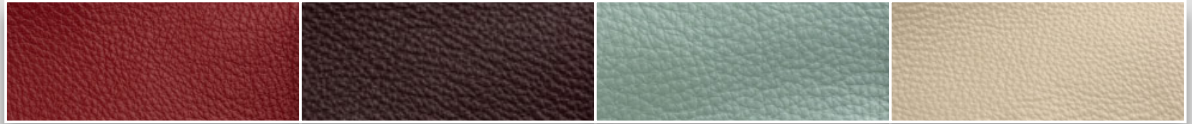


219

213

301

251

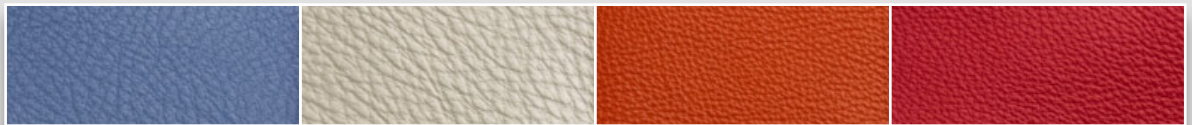


288

236

264

201

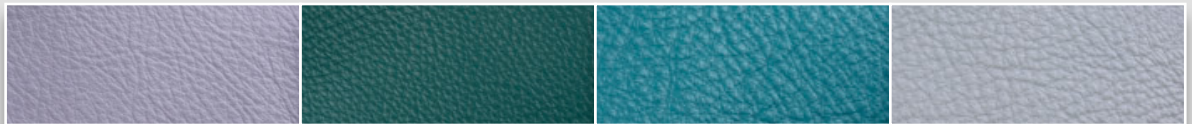


278

208

245

247

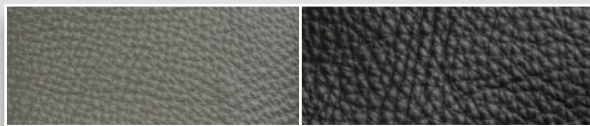


281

267

269

272



206

207

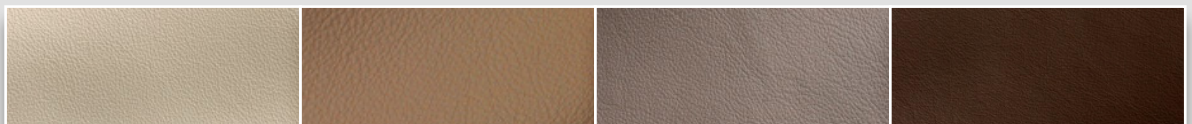
# 6

## CATEGORY

Type: real leather, lightly buffed natural grain  
 Thickness: 0,9/1,1 mm  
 Colour fastness to rubbing dry / wet: 500 / 250 cycles  
 Flexing endurance: 50'000 cycles



635

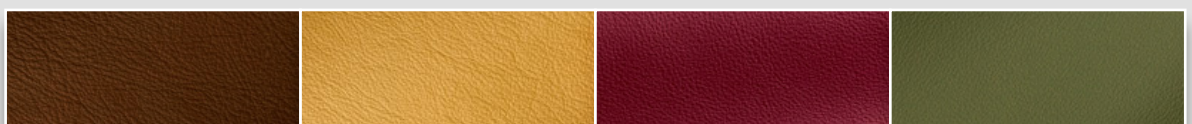


603

629

660

646



607

619

657

631



624

649

652

622

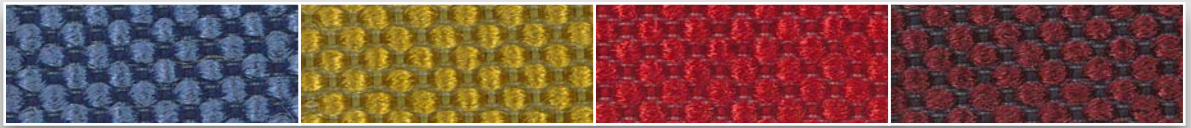
# 7

## CATEGORY

Composition: 66% Polyester; 34% Polyamid  
Abrasion Resistance: 200'000 Martindale cycles  
Flammability: D - DIN EN 1021 part1 - 2



70

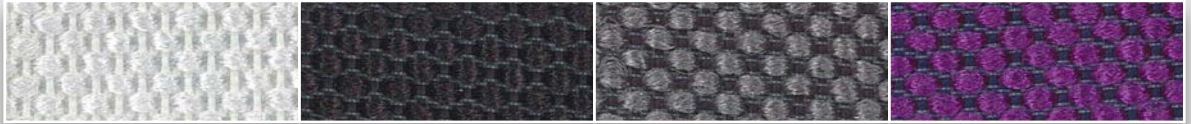


71

91

60

15



33

10

12

72

# 8

## CATEGORY

Composition: 100% Polyester  
Abrasion Resistance: 100'000 Martindale cycles



PS 8



PS 6

PS 7

PS 1

PS 2



PS 5

PS 8

**Moschella Sedute S.r.l.**  
Via Piane 129  
64046, Montorio al Vomano (TE)  
ITALY  
[info@moschellasedute.it](mailto:info@moschellasedute.it)

